



# The Orchid

**Bulletin of the Peterborough Field Naturalists**

"Know ♦ Appreciate ♦ Conserve Nature In All Its Forms"

Published 9 times yearly  
Publication Mail Agreement #4005104  
Box 1532, Peterborough, ON, K9J 7H7

Volume 58, Number 4 - May 2012  
Reg. Charity: BN#119091908RR0001  
[www.peterboroughnature.org](http://www.peterboroughnature.org)

Regular monthly meetings are held the 2<sup>nd</sup> Wed. of the month in the downstairs auditorium of the Peterborough Public Library at 345 Aylmer Street N.

## COMING EVENTS

<p>Saturday May 5<sup>th</sup> 10:00 a.m.</p> <p>Meet at Fleming College, Brealy Campus (meet at the 1<sup>st</sup> driveway on the left)</p> <p>Walk lasts 1.5 – 2 hours</p>	<p><b>Jane's Walk: "Suburban Connections: How rooftops and roadways impact local streams"</b></p> <p>The trails through Stenson Park all lead to the stormwater management pond that has become a haven for wild plants and animals capable of living in close proximity to suburban neighbours. The Stenson Park pond is a central feature of our community, putting people in touch with the natural environment and each other. But the pond is also an engineered structure, connecting the runoff from rooftops and roadways to our local stream, Harper Creek. Join our walk to discover and explore a suburban creek, and discuss the challenges that the built environment presents to streams and wetlands, and how we can make a difference!</p> <p><b>Walk Leaders:</b> Kim (Harper Park Stewardship Initiative), Jessica Kroes (Harper Park Stewardship Initiative), Gina Varrin (PFN Board).</p>
<p>Sunday May 6<sup>th</sup> 8:00 a.m.</p> <p>Mark S Burnham Provincial Park (parking lot just inside entrance)</p> <p>Walk lasts 1.5 hours (2 km trail with some steep sections)</p>	<p><b>Jane's Walk: "The Wild Side of Town: Wildflowers and Warblers at Mark S. Burnham Provincial Park"</b></p> <p>Join us for a walk on the wild side of town. Our exploration of Mark S. Burnham Provincial Park, "Burnham Woods" to most of us, should reveal a nice diversity of spring wildflowers in bloom, old growth trees, songbirds stopping over in the tree canopy and perhaps some other surprises. Along the way we'll have an opportunity to talk about places close to the city where we can explore nature, the issues of noise pollution and invasive species, and some local history. Visit: <a href="http://www.janeswalk.net/">http://www.janeswalk.net/</a></p> <p><b>Walk Leaders:</b> Mike McMurtry and Roger Jones.</p> <p>Meet in the parking lot near the entrance to Mark S. Burnham Provincial Park, just east of the city near Highway 7 and Keene Road. We recommend that cars and bicycles approach the park by travelling east on Parkhill Road, then south on Burnham Line, then turning right (west) on Highway 7 and proceeding another couple of hundred metres until you reach the entrance to the park. This will avoid a turn across Highway 7, which can be hazardous. The gates to the park should be open at the time of our visit.</p>

## COMING EVENTS continued

<p>Sundays May 13<sup>th</sup> to May 20<sup>th</sup> 8:00 a.m.</p> <p>Meet at Peterborough Zoo</p>	<p><b>Spring Wildlife Walks</b></p> <p>Our popular Spring wildlife walks will commence of Sunday April 8<sup>th</sup> and continue until May 20<sup>th</sup>, unless otherwise advertised. Most walks will start at 8:00 am and we will normally car pool from the parking lot of Peterborough Zoo on Water Street. Outings generally last about three hours. Bring some change to donate towards gas costs and bring binoculars if possible. In most cases the leaders will confirm the destination on the day.</p> <p>13 May          Martin Parker 20 May          Tony Bigg 27 May          Jerry Ball, all day trip to the Carden Plain, 7a.m. start (see separate entry)</p>
<p>Wednesday May 9<sup>th</sup>  7:30 p.m.  Ptbo Library</p>	<p><b>PFN Monthly Meeting: "Windmills &amp; White-nosed Syndrome"</b></p> <p>Did you know that 2011-2012 has been declared the Year of the Bat? At this month's meeting Paul Elliot will discuss some of the threats that are leading to declines in bat populations, including the latest research on the devastating fungal infection responsible for White Nose Syndrome and the toll taken by wind turbines.</p>
<p>Sunday May 27<sup>th</sup>  7:00 a.m.  Meet in the Sobey's Parking lot (Lansdowne)</p>	<p><b>Carden Plain Important Bird Area (IBA)</b></p> <p>An all-day visit to the Carden Plain, an unusual alvar habitat that is home to an abundance of rare grassland bird species, butterflies and plants. Jerry Ball will guide us through this globally rare habitat is only 65km from Peterborough. The trip offers the chance of seeing such birds as the Loggerhead Shrike, Golden-wing warbler, Osprey, Black Terns, Sedge Wren, Yellow Rail, Upland Sandpiper, Blue Bird, Eastern Towhee and Brown Thrasher. Bring some lunch, water and binoculars. Meet at Sobey's parking lot on Lansdowne Street West at 7:00 a.m.</p>
<p>Wednesday June 13<sup>th</sup>  7:30 p.m.  Ptbo Library</p>	<p><b>PFN Monthly Meeting: "'Beachmaster Bulls &amp; Flying Footballs': Wildlife in Alaska's Pribilof Islands"</b></p> <p>The Pribilof Islands, sometimes called the 'Galapagos of the North', are tiny volcanic islands in the middle of the Bering Sea. This remote archipelago is home to almost a million northern fur seals (males are referred to as beachmasters), an incredible diversity of nesting seabirds, including two species of puffins, (sometimes described as flying footballs), Arctic "Blue Fox", reindeer, native Aleut culture and a colorful palette of arctic wildflowers. Discover this fascinating far western North American wildlife paradise, with your guide, Sean, who spent nine years managing the St. Paul Island Tour.</p>
<p>Saturday June 23<sup>rd</sup>  8:00 a.m.</p> <p>Meet at the North Parking lot at the Ptbo Zoo</p>	<p><b>PFN Outing: "Dragon's-mouth, Snake Mouth and Grass Pink"</b></p> <p>These are the descriptive names for the three pink orchids which are blooming in the bog around Little Chandos Lake in the last half June. This trip will focus on these orchids, Arethusa, Rose Pogonia and Calopogon and the other characteristic bog plants. There will be ample opportunities to photograph these orchids and other bog plants. The trip leaders will be Kingdon Baker and Martin Parker. Lunch will be at the Baker's cottage on Chandos Lake where dessert, lemonade and coffee will be provided. The afternoon will be spent at The Gut Conservation Area. Bring footwear you can get wet, lunch except for dessert, and camera.</p>

## JUNIOR FIELD NATURALISTS

### Green-in-Motion Event

**When:** Sunday, May 27<sup>th</sup>, 9:00 a.m. to 1:00 p.m.

**Where:** Camp Kawartha Environment Centre (located along Pioneer Road at Trent University)

The JFN program is going to be part of the Green-in-Motion event held by Camp Kawartha on May 27<sup>th</sup> at the Camp Kawartha Environment Centre (at Trent University). The time is from 9-1. Any form of green motion is welcomed. There will be prizes, activities, refreshments and great family fun. A pledge form can be downloaded via at [www.campkawartha.ca](http://www.campkawartha.ca). See you then!



### Other Events of Interest

Saturday May 12 <sup>th</sup>	<b>Kawartha Heritage Conservancy's Canoe/Kayak Day and BBQ</b> at the Emily Creek Property
Saturday May 12 <sup>th</sup>	<b>Native Plant Sale.</b> The <b>North American Native Plant Society</b> is having their annual native plant sale on Saturday May 12 from 10am to 3pm at the Markham Civic Centre (101 Town Centre Boulevard in Markham). Wildflowers, ferns, grasses and sedges, as well as trees and shrubs will be available. The 370 native plant species for sale are all grown from locally-sourced seeds and spores. A wide selection of nature books will also be available for purchase. For more information, visit <a href="http://www.nanps.org/">http://www.nanps.org/</a> or email <a href="mailto:nanps@nanps.org">nanps@nanps.org</a>
June 1 - 3	<b>2012 Carden Nature Festival.</b> The Carden Nature Festival is a smorgasbord of more than 100 environmental delights celebrating the remarkable biodiversity of the Carden Plain. You'll see birds, butterflies, dragonflies, moths and unique alvar flowers. Last year, many events sold out by April, so don't wait to register. Visit, <a href="http://www.cardennaturefestival.ca/">http://www.cardennaturefestival.ca/</a> or call 705-326-1620 for a free festival brochure.
Saturday June 2 <sup>nd</sup>	<b>International Trails Day Festival 2013</b> This festival is to raise awareness of the recreational trails within the City and County of Peterborough and internationally. It aims to encourage residents to get outdoors, explore and learn from and enjoy our local recreational trails. This festival is being supported by municipalities within the <b>County of Peterborough</b> including the city. The central location will be at Del Crary Park from 10:00 a.m. to 2:00 p.m. with exhibits and entertainment. Opening Ceremony will be at 11:00 a.m. <b>Peterborough Field Naturalists</b> will be participating. Check newspaper for full schedule.
Tuesday June 5 <sup>th</sup>	On Tuesday June 5 <sup>th</sup> from about 5:30 to 9:00 p.m. (sunset) the <b>Peterborough Astronomical Association</b> will be on Armour Hill to watch the <b>transit of Venus</b> across the face of the Sun's disk before the sun sets that night. The last time this happened was 8 years ago and the next time it will happen will be 105 years from now! It is a rare astronomical event.





**kawartha**  
TRANS CANADA TRAIL

# Adventure Travel Festival

Film & Public Speaking Series

**June 1-2, 2012**

FEATURING

**Colin Angus** & **Kevin Callan**  
World Traveler Extraordinaire | The Happy Camper

## Friday June 1st

**\$25** *Motivate yourself and your staff!*  
**Planning & Goal Setting Talk + Live Auction**  
1:30 pm - 3:30 pm  
Farmer's Mutual Insurance, Lindsay, Ontario

**\$20** *Have you ever dreamed of an adventure?*  
**Adventurists and Authors**  
Public Speaking Series with Colin Angus & Kevin Callan  
7:00 pm - 9:30 pm  
Fleming College Frost Campus, Lindsay, Ontario

## Saturday June 2nd

### International Trails Day Celebrations

**\$10** **Amazon From Source to Sea**  
Matinee Film Presentation & Talk with Colin Angus  
2:00 pm - 4:00 pm  
Fleming College Frost Campus, Lindsay, Ontario

**\$20** *Have you ever dreamed of an adventure?*  
**Adventurists and Authors**  
Public Speaking Series with Colin Angus & Kevin Callan  
7:00 pm - 9:30 pm  
Fleming College Sutherland Campus, Peterborough, Ontario



**\* All proceeds go to the maintenance and development of the Kawartha Trans Canada Trail.**

### Tickets Available: \*

[www.adventuretravelfestival.ca](http://www.adventuretravelfestival.ca)

Down to Earth (Kent Street, Lindsay)

Lindsay and District Chamber of Commerce (Lindsay Street, Lindsay)

Wild Rock (Charlotte Street, Peterborough)

Our Generous Sponsors



919bobfm.com

For more information including tickets check out our website:

[www.adventuretravelfestival.ca](http://www.adventuretravelfestival.ca)

## A Rare Event - Come Out and View the "Transit of Venus"!

On June the 5<sup>th</sup> the planet Venus will cross the face of the Sun! This is called a "transit" and this won't happen again until the 22<sup>nd</sup> century. There have only been six of these rare transits of Venus ever observed in recorded history. You won't want to miss this one or you will have to wait 105 years for your next opportunity.



Come join the Peterborough Astronomical Association (PAA) to observe this free public event at Ashburnham Memorial Park on Armour Hill. Please park in the parking lot of the Peterborough Museum and Archives and walk up the hill. A number of safe solar filtered telescopes will be set up and members of the PAA will be there to demonstrate and answer questions. Be early because the transit will commence at about 6:00 p.m. and will continue until sunset. From our location Venus will complete its journey after sunset and out of our view. This event is weather dependent.

After the transit, members of the PAA will remain on the hill until midnight with their telescopes set up to potentially view Mars, Saturn and many other wonders of our night sky. The Moon will make an appearance around 11:00 p.m.

Check the website: <http://www.peterboroughastronomy.com/>

For more information contact: Rodger Forsyth, President (705-292-0729, [rforsyth@nexicom.net](mailto:rforsyth@nexicom.net)) or Rick Stankiewicz, Publicity Director (705-295-6158, [stankiewiczr@nexicom.net](mailto:stankiewiczr@nexicom.net))



*Photo of the last  
'Transit of Venus'  
taken by Rick  
Stankiewicz, June  
2004. After June 5<sup>th</sup>  
2012, the next  
transit will not  
happen for another  
105 years!*



## **The Veery, member of the Thrush Family**

*-by June Hitchcox, courtesy of the Apsley Voice*

A yearly reminder: By the time you are reading this, the Hummingbirds will be arriving from their long journey north and will be starving hungry. They must rely on a few flowers, insects and the sap from Sapsucker holes for food so will certainly welcome Hummingbird feeders. They would tap on our cottage window, asking that the feeders be put out! Clean and thoroughly rinse the feeder. In a pot, put  $\frac{1}{4}$  cup of white sugar + 1 cup of water – boil-cool – fill the feeder. DO NOT add red food colouring – it deforms their young. --- The various members of the Thrush Family have spotted breasts – Robins and Bluebirds only when young but Hermit, Wood, Swainson and Veery all their lives. They also have lovely songs. Bob and I would often go far down Jack's Lake Road on a quiet evening to hear the Veerys just at dusk, their beautiful, ethereal, downward "veer" song from which they get their name. The Veery is all the same colour above – a tawny, reddish brown; slightly smaller than a Robin; a shy bird, found in dense, moist woodlands, foraging on the ground for berries, insects, spiders, earthworms. Its nest is either on the ground or just above. The Hermit has a reddish-brown tail; The Wood has a reddish-brown head – so with some practice, you will be able to tell them all apart.

### **New Members:**

**Caroline Tennet**

**Rob Tonus**

**David Loftus & Carmen Jones**

**Meredith Clark**

**Tamara Hoogerdyk & Bill Atkinson**

**Aimee Blyth**

**Kristina Rawlings & Billy Ditchburn**

**Kyle Ryckman**

**Welcome!**

### **Calling all Naturalists!**

Ontario Parks hopes to make use of your eyes and ears. Many of you enjoy naturalizing at provincial parks and nature reserves in the Peterborough area – sites like Mark S. Burnham (Burnham Woods), Emily, Peter's Woods, Wolf Island in the Kawartha Lakes, Kawartha Highlands, Petroglyphs, and Silent Lake.

Did you know that your species lists could be useful to us as we plan for the management of these parks? For some of these areas we actually don't have very much biological information.

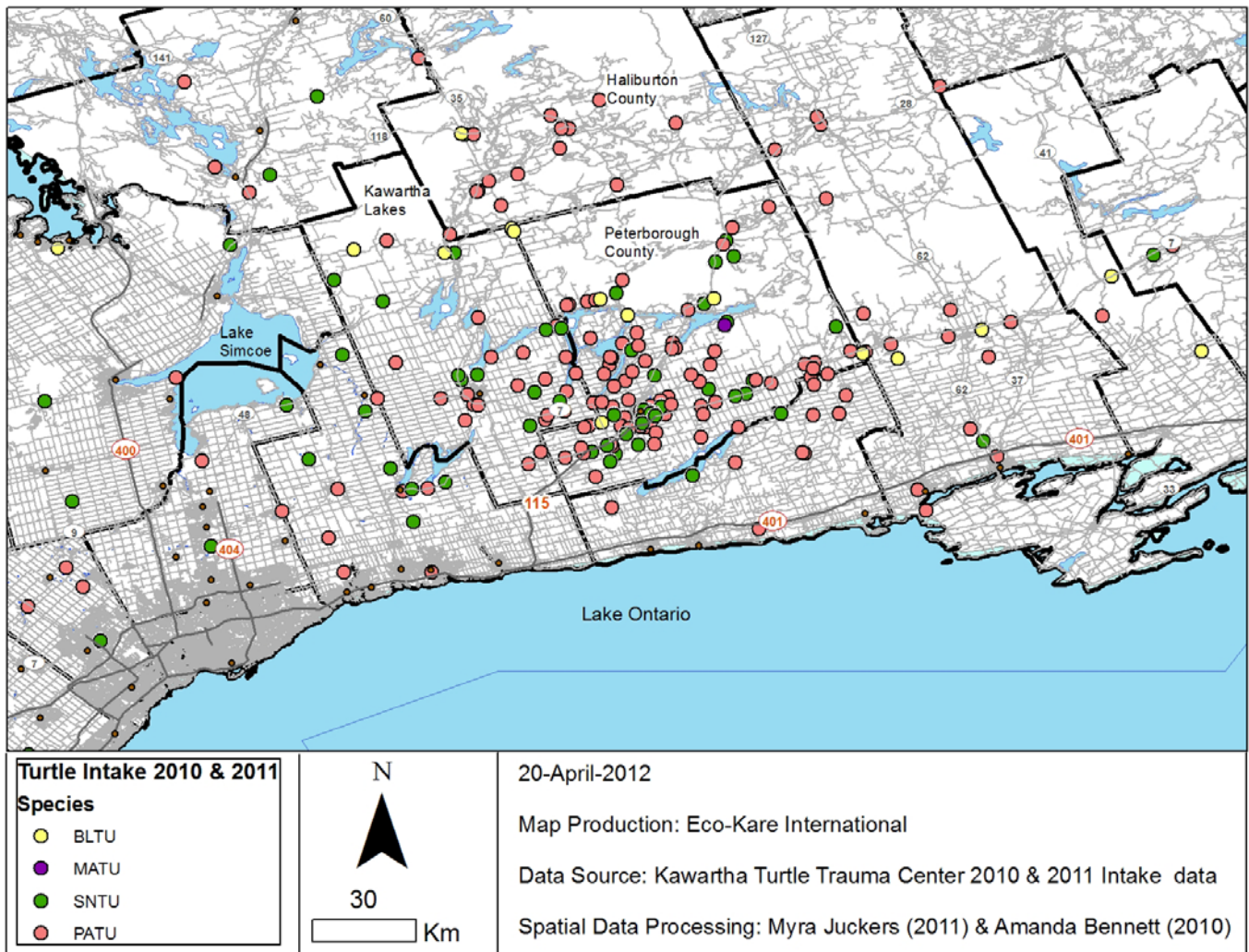
If you have kept species lists or other interesting information for these parks, please send them to Corina Brdar, Ontario Parks Southeast Zone Ecologist ([corina.brdar@ontario.ca](mailto:corina.brdar@ontario.ca)), along with the date that the sightings were made. And of course, if you observe a rare species, report your sighting to the Natural Heritage Information Centre  
<http://nhic.mnr.gov.on.ca/>

## Kawartha Turtle Trauma Centre helps to save turtles from dying on the road

*-submitted by Myra Juckers, Bachelor of Science Candidate in Environmental and Resource Science, Trent University, Peterborough, Ontario & Kari Gunson, Principal, Eco-Kare International, Peterborough, Ontario*

Ontario has eight native turtle species, seven of which have been listed by the Committee on the Status of Endangered Wildlife in Canada (COSEWIC) as species at risk. Turtles are long-lived species that have delayed sexual maturity and low reproductive output. As a result, declines in turtle numbers seriously threaten population stability. In Ontario, road mortality has been identified as a serious threat for turtles. Non-governmental organizations, such as the Kawartha Turtle Trauma Centre (KTTC), provide an essential component for turtle recovery in Ontario.

A data management study was conducted at KTTC to summarize data gathered in 2011. Summaries included species, sex and life stage of turtles admitted, when turtles were most prone to injury, and the primary cause of injury. From the study it was found that the primary reason (77%) for adult turtles to be admitted to the centre was because of a car-related incident (hit by car and suspected to be hit by a car). The majority of car-related collisions occurred in June with the greatest portion of that being females (43%) whereas the highest portion of collisions for adult males was in May at 11%. The majority of adult turtles (54%) died as a result of their injuries sustained in a car related incident. From that, 33% were female, 15% were male,





and 6% were unknown. However, 30% of the adult turtles, half of which were female, brought to the centre due to a car related incident were treated and released back into the wild contributing to the recovery of species at risk (SAR) turtles.

The majority of collisions occurred in June with females most likely because nesting season typically occurs from the end of May to the end of June. Female freshwater turtles may travel up to 1 km from the water in search of a suitable nest site, during which they may attempt to cross roads. As well, roadsides provide attractive nesting sites because of the open canopy and well-drained soils increasing their risk of collision. KTTC's efforts are more than just healing injured turtles; they collect valuable information that is essential for conservation efforts and contributing to the development of recovery plans. Community members can assist the centre's efforts by first driving carefully from May to June but also by taking careful note of the exact location where a turtle was found, either with a GPS unit or by recording the road name and closest road intersection. This information enables the centre to compile accurate location data which can be mapped to identify when, where, and how turtles are being injured. In turn, this information can be put to good use by prioritizing outreach efforts, informing the development of recovery plans, and informing the placement of mitigation, such as turtle crossing tunnels and signs.



*Snapping Turtle along a road. Photo by Christine Jennings.*



## **ONTARIO NATURE Lake Ontario North Regional Meeting Held on 14 April 2012 at Ken Reid Conservation Area, Hosted by Friends of the Osprey**

*-by Lynn Smith*

With beautiful pictures and videos, members of the Friends of the Osprey presented a very informative talk on their work with osprey in the Kawarthas. Their adventures with building osprey platforms, returning young to nests, catching osprey and attaching telemetry equipment has been very rewarding. Check out [www.friendsoftheosprey.org](http://www.friendsoftheosprey.org) to follow the migration of the tagged osprey as she moves north. She overwintered in Brazil, much further south than expected, and fed all winter within a square km area.

### **Highlights:**

**Naturalist Clubs** across the Region continue to maintain, enhance, bioblitz, remove invasive species, put up signage and monitor a variety of important habitats in their respective areas. They encourage community involvement and educate the public. All are busy and looking for new members, especially younger folk.

**Richmond Hill Naturalist Club** has, for many years, tried to prevent development at the David Dunlap Observatory site. However, there has been approval for development in 54% of the area.

**ONTARIO NATURE** is investigating the consequences of the recent budget bill. The government has made changes in the environmental legislation. Of particular concern is the Endangered Species Act and the Provincial Parks and Conservation Reserves Act.

**The Snapping Turtle Hunt petition** was presented to government with 11,000 signatures and a report on why the hunt is unsustainable to the snapping turtle population. A response is still to come. Snapping turtle meat was analyzed and found to contain mercury and PCB levels considered to be a potential health hazard.

### **Resolution concerning proposed Pickering airport**

Transport Canada is in the early stages of planning for the development of an international airport on Pickering Lands. A resolution opposing the airport will be presented at the Ontario Nature AGM in June 2012 for vote.

### **ONTARIO NATURE ANNUAL GENERAL MEETING**

**Date:** June 8 – 10, 2012 at Opinicon Resort Hotel, Kingston area.

Check website [http://www.ontarionature.org/discover/annual\\_general\\_meeting.php](http://www.ontarionature.org/discover/annual_general_meeting.php) for details of workshops, field trips, accommodation.

## **American Kestrel Partnership Website Now Online**

*-from Nature Network News, April 15, 2012, submitted by Allyson Woodard, Peregrine Fund*

After many months of hard work, the Peregrine Fund is thrilled to announce that the website for their new international initiative, the American Kestrel Partnership, is now up and running at <http://kestrel.peregrinefund.org/index.php>. The American Kestrel Partnership was launched in response to kestrel population declines across much of North America. The Partnership is calling on citizen and professional scientists to help them generate data on local kestrel populations by installing and monitoring nestboxes in their community. For more information on this exciting initiative, contact Allyson Woodard at [awoodard@peregrinefund.org](mailto:awoodard@peregrinefund.org) or through the American Kestrel Partnership website.

---

## **2012 Great Backyard Bird Count Results Are In**

*-from Nature Network News, April 15, 2012, submitted by the Great Backyard Bird Count*

This year, Great Backyard Bird Count (GBBC) participants submitted a record-smashing 104,151 checklists with 17.4 million individual bird observations! An overwhelming success, the 2012 GBBC also set new checklist records in 22 states and 6 provinces. Great job everybody! The Great Backyard Bird Count is an annual 4-day event that engages bird watchers of all ages in counting birds to create a real-time snapshot of bird populations across the continent. To view the 2012 results, visit <http://gbbc.birdsource.org/gbbcApps/results>.

---

## **Avibase Goes Mobile**

*-from Bird Studies Canada Latest News e-newsletter, 11 April 2012*

Avibase (<http://avibase.bsc-eoc.org/>) offers a wealth of information about birds around the world. There is now a new mobile version of Avibase (<http://avibase.bsc-eoc.org/mobile/>), making it easier than ever before for smartphone users to access the same information found on the main Avibase website. As with the standard site, the mobile site provides bird checklists from virtually anywhere in the world, and also enables users to look at photos and listen to recordings for a majority of those birds. To see photos and listen to sounds more quickly, visitors can now simply click on a species name within any checklist – a new feature that was recently introduced in both the mobile and the standard versions. Avibase is one of the world's most popular birding websites. Bird Studies Canada hosts the site, which is maintained by Avibase creator and BSC Senior Scientist Denis Lepage.

---

## **Are Chimney Swifts Back in Your Area?**

Please let us know when Chimney Swifts return to your home town by emailing me or by positing to the Ontario SwiftWatch facebook page at [www.fb.com/ontarioswift](http://www.fb.com/ontarioswift)

Kathy Jones, Volunteer Coordinator, Bird Studies Canada, [volunteer@birdscanada.org](mailto:volunteer@birdscanada.org)



*Hoary Elf on Bearberry, April 19, 2012. Photo by Tony Bigg.*



## ORCHID SUBMISSIONS WANTED

**Deadline for submissions for the June issue: Sunday, May 27<sup>th</sup>, 2012**

Please send all submissions to: **Rebecca Zeran, PFN, PO Box 1532, Peterborough, ON, K9J 7H7** or via e-mail to: [rebecca.zeran@mail.mcgill.ca](mailto:rebecca.zeran@mail.mcgill.ca)

### PFN Officers and Directors

President	Martin Parker	Mparker19@cogeco.ca	745-4750
Past-President	John Bottomley	johnbottomley@sympatico.ca	742-1524
Vice President, Program (indoor)	Gina Varrin	gina.varrin@gmail.com	761-7787
Secretary	Emily Pettypiece	donem.pettypiece@bell.net	750-1145
Treasurer	Don Pettypiece	donem.pettypiece@bell.net	750-1145
Membership	Jim Young	jbyoung@persona.ca	292-5444
Program (outdoor)	Paul Elliott	paulelliott@trentu.ca	740-0501
Webmaster	Chris Gooderham	webmaster@peterboroughnature.org	
Newsletter Editor	Rebecca Zeran	rebecca.zeran@mail.mcgill.ca	743-2660
FON Rep	Lynn Smith	smithfam@nexicom.net	944-5599
Special Publications	Kelly Boadway	kjboadway@gmail.com	775-0756
Member at Large	Sean Smith	Seansmith64@hotmail.com	875-6178

### Other Volunteers

Bird Feeders	Sean Smith & Don Finigan	
Orchid Diary	Tony Bigg	652-7541
Orchid Mailout	Bob Quinn	
Jr. Naturalists	Neil Fortin	292-6185







## The ORCHID DIARY for March 24 - April 29, 2012

Compiled by Tony Bigg, 652-7541, [tanddbigg@sympatico.ca](mailto:tanddbigg@sympatico.ca)

The most significant event of the period was undoubtedly the influx of Red Admirals from the south. As reported by Colin Jones - "Currently, what is probably an unprecedented mass migration (both in numbers and timing – i.e. much earlier than normal) of Red Admirals (as well as lesser numbers of other migratory butterflies such as Question Marks) from further south, is occurring here in Ontario and throughout the northeastern U.S. and Canada." The second significant sighting was the Barrow's Goldeneye in Rice Lake. A long cold spell slowed the migration of birds down to a more normal timing.

- Mar 26 A **Trumpeter Swan** (tag J85) was seen by Brian and Lynda Neck in front of their house on the east side of Chemong Lake a kilometer south of the causeway.
- Mar 27 Tony Bigg heard a **Swamp Sparrow** singing in a swamp on the south side of the rail trail between Blezard line and Villier's Line.
- Mar 29 Checking a few spots near Rice Lake, Scott Gibson found a rare **Barrow's Goldeneye** off Asphodel Heights Park. He also saw five **Canvasbacks** of Herkimer Point, two **Sandhill Cranes** feeding in a field of Birdsall Line, a **Common Loon** of Birdsall Wharf, and **Osprey** in four different locations. The **Barrow's Goldeneye** was later seen Mike Burrell, Simon Dodsworth, and Cathy Darevic.
- Mar 30 Kim Clark saw a **Trumpeter Swan** (tag J82) in Little Lake off Beavermeade Park. The **Barrow's Goldeneye** was reseen by Tony Bigg, Drew Monkman, Mitch Brownstein, and Jim Cashmore at the same spot as yesterday. DM, MB, and JC also eight **Tree Swallows** at the same spot and another thirty or so at the bottom of Birdsall Line where a **Common Loon** was present as well. They counted five **Osprey** along Cty Rd 2, most perched on nest platforms. Scott McKinlay was fortunate enough to have five woodpecker species in his back yard in Cavan - two **Hairy Woodpeckers**, a **Downy Woodpecker**, a **Northern Flicker**, a first for his yard female **Red-bellied Woodpecker**, and he heard but did not see a **Pileated Woodpecker**.
- Mar 31 Joe Knauer photographed a **Trumpeter Swan** on Upper Buckhorn Lake. Matthew Tobey saw two **Turkey Vultures** and a **Cooper's Hawk** circling above his yard in Peterborough, and saw a pair of **Purple Finches** at his feeder. Late in the evening he saw a **Short-eared Owl** by the storage pond by Fisher Drive in the south of Peterborough.
- Apr 01 Scott McKinlay and Lynn Smith had a good days birding in the south of the county finding five **Great Blue Herons**, four **Belted Kingfishers**, a third or fourth year **Bald Eagle** chasing an **Osprey**, a pair of **Red-breasted Mergansers** at the bottom of Birdsall Line, a **Northern Shrike**, just north of Bensfort Bridge, **three Eastern Bluebirds**, a pair of **Northern Shovelers** in the pasture ponds on Johnston Rd south of Hwy 115, and a **Blue-winged Teal** on Brown Line immediately west of Airport Rd. They also saw the **Barrow's Goldeneye** at Asphodel Heights Park.
- Apr 02 This evening, Tim Haan heard two **Sandhill Cranes** and an **American Woodcock** calling on Cty Rd 46 just north of Round Lake.
- Apr 03 Matthew Tobey again saw the **Short-eared Owl** in the same area, and saw a **Sharp-shinned Hawk** and two **Common Ravens** on Green Boulevard.
- Apr 04 Chris Risley watched the **Short-eared Owl** flying over the brushy open area southwest of the corner of Jameson Drive and Major Bennet Drive in the industrial park off Fisher Drive in the south of Peterborough.
- Apr 06 A **Broad-winged Hawk** was seen by John Bottomley, flying over Hwy 7 at Asphodel 5th Line.
- Apr 07 Two pairs of **Northern Shovelers**, a male **Green-winged Teal**, and a female **Wood Duck** were observed by Matthew Tobey with hundreds of **Canada Geese** in the pasture land ponds on Johnston Drive south of Hwy 115. Whilst kayaking on Lower Buckhorn Lake Kim Clark saw the breeding pair of Bald Eagles near Wolf Island PP. The female was sitting on the nest with the male was in a tree nearby.
- Apr 08 In the Lakefield sewage lagoons Kim Clark saw a male **Ruddy Duck**, three **Green-winged Teals**, two **Northern Shovelers**, four **Gadwall**, **Buffleheads**, and **Ring-necked Ducks**. The Sunday morning PFN walk, led by Tony Bigg, were fortunate to see a total of twenty-five **Wilson's Snipe**. The largest number, sixteen, were on Duoro 9th Line south of Cty Rd 4 just past the first farm. The group also saw about twenty **Green-winged Teal** in a flooded field on on Asphodel Line not far north of Cty Rd 2, Other birds of note were **Common Loon** and three **Trumpeter Swans** at Asphodel Heights on Rice Lake, several **Ospreys**, **American Kestrel**, **Savannah Sparrows**, two **Pileated Woodpeckers**, and a **Purple Finch**.

- Apr 09 On an Easter Weekend hike through Petroglyphs Provincial Park, Andrew Lipscombe did the loop around Nannabush Lake and came across an **Eastern Hog-nosed Snake**. He also saw a lot of **Wild Turkeys** and **Great Blue Herons**.
- Apr 10 Tony Bigg heard a **Sora** calling from the Lakefield Marsh early in the morning. An **Opossum** was trapped by Bob Hardill in his yard in Bridgenorth.
- Apr 12 A **Trumpeter Swan** was seen by Sherry Hambly where Mervin Line meets the Otonabee River
- Apr 13 A **Yellow-bellied Sapsucker** was seen by Sherry Hambly midway along Barlett Rd. Tony Bigg saw a **House Wren** on the rail-trail between Base Line and David Fife Line
- Apr 14 Tony Bigg saw a **Yellow-rumped Warbler** in the park beside the Lakefield Marsh.
- Apr 15 Among the many birds on the PFN Sunday outing we saw two **Greater Yellowlegs** on Assumption Rd
- Apr 16 **THE GREAT INFLUX OF RED ADMIRAL BUTTERELFIES!!** The warm south westerly wind brought in huge number of butterflies from the south, mostly **Red Admirals** (reported by Sherry Hambly, Toni Sinclair, Drew Monkman, John Bottomley, Martin Parker, Tony Bigg). Other butterflies reported were, **Questionmark** (Sherry Hambly, Drew Monkman), **Spring Azures** (Toni Sinclair, Tony Bigg) **Mustard White** (Tony Bigg), **Eastern Pine Elfin** (Tony Bigg), **Mourning Cloak** (Tony Bigg), **Gray Comma** (Tony Bigg). Also in with the warm weather were large numbers of **Ruby-crowned Kinglets**, reported by Tony Bigg as seen in the Trent Wildlife Sanctuary. Also seen there were **Golden-crowned Kinglets**, **White-throated Sparrows**, an **Eastern Bluebird** disputing ownership of one of the nest boxes with the many **Tree Swallows**, a **Yellow-bellied Sapsucker** drumming, three **Winter Wrens** and two **Purple Finches**. A **Porcupine** was asleep in a Poplar tree.
- Apr 18 Drew Monkman walked the Trent Wildlife Sanctuary trails and noted that the **Red Admirals** had survived the cold weather of the previous night (-7C). He also had an **American Lady**. Birds seen were twelve **Ruby-crowned Kinglets**, a **White-throated Sparrow**, and **Winter Wren**. **Serviceberry** was in bloom and the flowers of both **White Trillium** and **Marsh Marigold** were very close to opening. For the third day in a row J Philpott observed an adult **Bald Eagles** flying over Upper Buckhorn Lake. Sean Smith saw the first **Gray Catbird** of the year off the trail south of Pioneer Rd near Trent University. Tony Bigg saw two **River Otters** in the Lakefield Marsh
- Apr 19 Tony Bigg and Bob Prentice went looking for butterflies on Hubble Rd, Devil's 4 Mile Rd, and Sandy Lake Rd. They had **Red Admiral** (58), **Question mark** (4), **Mourning Cloak** (2), **Spring Azure** (11), **Eastern Comma** (2), **Gray Comma** (1), **Eastern Pine Elfin** (16), **Hoary Elfin** (5), **Henry's Elfin** (1), **Brown Elfin** (1), and **American Lady** (1). In a marsh just north of the junction of Cty Rd 46 and Cty Rd 47 they saw and heard an **American Bittern**, and heard a **Virginia Rail**.
- Apr 19 Jerry Ball and Drew Monkman explored roads north of Buckhorn - Tie's Mt Rd, Charlie Allen Rd, Tates RD, contd Galway-Cavendish Forest Access Rd, Pencil Lake Rd, Salmon Lake Rd. They found **Red Admirals** (+140, including 15 on the trunk of one tree that was bleeding sap), **Questionmark** (7), **Gray Comma** (2), **West Virginia White** (2), **Mustard White** (9), **Spring Azure** (8), **American Lady** (2), **Eastern Pine Elfin** (9), **Mourning Cloak** (1). Flowers in bloom included **Red Trillium**, **White Trillium**, **Trout Lily**, **Spring Beauty**, **Round-lobed Hepatica**, **Nodding Bellwort**, **Bloodroot**, **Blue Cohosh**, **Coltsfoot**, **Marsh Marigold**, and **Red-berried Elder**. Birds of note included **Yellow-bellied Sapsucker** (20+), **Winter Wren** (10), **Hermit Thrush** (10), **Broad-winged Hawk** (10), **Pine Siskin** (10), **Evening Grosbeak** (2), **Yellow-rumped Warbler** (4), **Pine Warbler** (8), **Merlin** (1), **Wild Turkey** (7), **Ruffed Grouse** (5), **Wilson's Snipe** (1) and **American Woodcock** (1). Herptiles included **Blanding's Turtle**, **Northern Leopard Frog**, **Chorus Frog** and **Spring Peeper**.
- Apr 20 Two **Sandhill Cranes** flew over Tony Bigg on the Buckhorn Rd at Smith 17th Line
- Apr 22 The Sunday morning PFN walk, led by Drew Monkman, found **Hermit Thrushes**, **Yellow-rumped Warblers**, a **Winter Wren** and a **Blue-headed Vireo** in full song at the Warsaw Caves CA. At Terry Hunter's Farm on Hwy 28 north of Hwy 7, they added **Cooper's Hawk**, **Northern Harrier**, **Pine Warbler**, **Wood Duck**, **Tree Swallow**, **Eastern Meadowlark**, **Eastern Phoebe**, and **Field Sparrow**.
- Apr 23 Near the Lakefield Marsh lookout, Tony Bigg saw a **Palm Warbler**.
- Apr 24 At the wetland on Fairbairn St, north of Cty Rd 19 Drew Monkman saw and heard **Common Gallinule** (Moorhen) and **Pied-billed Grebe**. He also heard a **Virginia Rail**. Later in a flooded field at the NW corner of Cty Rd 19 and Cty Rd 18 he found a single **Greater Yellowlegs**.
- Apr 29 Tony Bigg saw his first butterfly in the skipper group for the year - a **Juvenal's Duskywing**.



# PETERBOROUGH FIELD NATURALISTS

[www.peterboroughnature.org](http://www.peterboroughnature.org)

## membership application form

Memberships may be obtained by mailing completed form and cheque to

Peterborough Field Naturalists  
PO Box 1532, Peterborough, ON K9J 7H7

### CONTACT

Name (s):		Home Tel:	
		Work Tel:	
Address:		Receive Orchid by:	Email(s):
		<input type="radio"/> snail mail <input type="radio"/> e-mail <input type="radio"/> both please	

### MEMBERSHIP TYPE & FEE SCHEDULE

Please make cheques payable to *Peterborough Field Naturalists*

1. Single Adult \$25 ☐ 2. Single Student \$15 ☐ 3. Single Child\* (age 5-12) \$10 ☐

4. Family (couple or family with children\*) \$30 ☐

\*Please give the name(s) and age(s) of the children you wish to be enrolled in the PFN Junior Naturalists

Name	Age*	Name	Age*

### MAIN INTERESTS

<input type="radio"/> Birds	<input type="radio"/> Butterflies/insects	<input type="radio"/> Botany (Wildflowers/trees/shrubs)
<input type="radio"/> Astronomy	<input type="radio"/> Aquatic Life	<input type="radio"/> Geology <input type="radio"/> Field Trips
<input type="radio"/> Hiking	<input type="radio"/> Conservation	<input type="radio"/> Other (specify)

I (name \_\_\_\_\_) am knowledgeable in the following areas \_\_\_\_\_ and would be prepared to

☐ lead an outdoor session ☐ give a presentation ☐ prepare an article for The Orchid

### I am interested in the following:

☐ Joining the PFN Executive ☐ Sitting on research or conservation committees ☐ Working on field projects  
☐ Helping with refreshments at meetings ☐ Please have a member of the executive call me

### AGE GROUP

This information helps us to understand the needs of our members. If a family membership, please check for each adult

☐ Under 20 ☐ 20-29 ☐ 30-39 ☐ 40-49 ☐ 50-59 ☐ 60-69 ☐ 70-79 ☐ 80 < over

### DONATIONS

Membership fees cover the general operating costs of the club while other sources of revenue are needed to fund special projects such as ecological restoration. You can assist the club by making a donation to help further our work in such areas. The PFN is a registered charity and issues receipts for income tax purposes. All donations are gratefully received and any member of the executive will be happy to speak to you concerning the use of such funds.

### LIABILITY WAIVER

In consideration of the Peterborough Field Naturalists (PFN) accepting this application, I hereby for myself, my heirs, executors, administrators and assigns forever release and discharge the PFN, their officers, directors, servants and agents from any liability whatsoever arising from my participation in PFN activities, whether by reason of negligence of the PFN or its representatives, or otherwise. I affirm that I am in good health, capable of performing the exercise required for field trips or other activities in which I participate, and accept as my personal risk the hazards of such participation. As a member of the PFN and/or as a parent/guardian of a member under 18 years of age, I have read and understood the above, and accept its term on behalf of all of my underage children.

Signature: \_\_\_\_\_