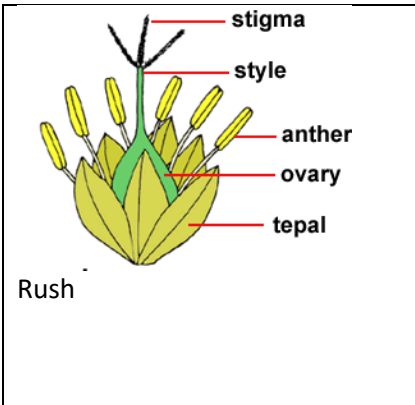
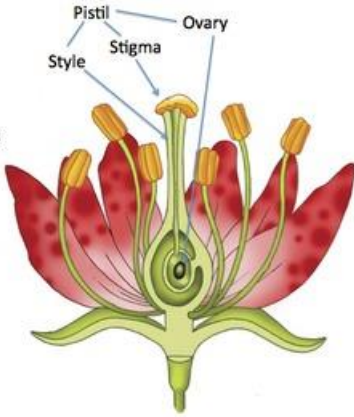


Glossary

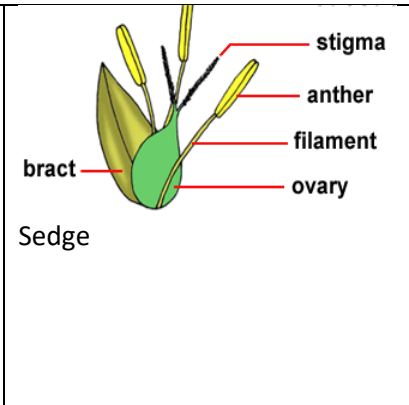
Flower Parts -

Pistil

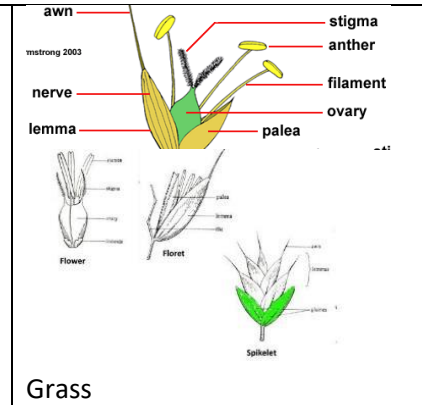
- In the center of most flowers
- Female reproductive structure
- Tip is sticky and collects pollen - *stigma*
- Long, slender part is the *style*
- The rounded base that has ovules (eggs) is called the *ovary*



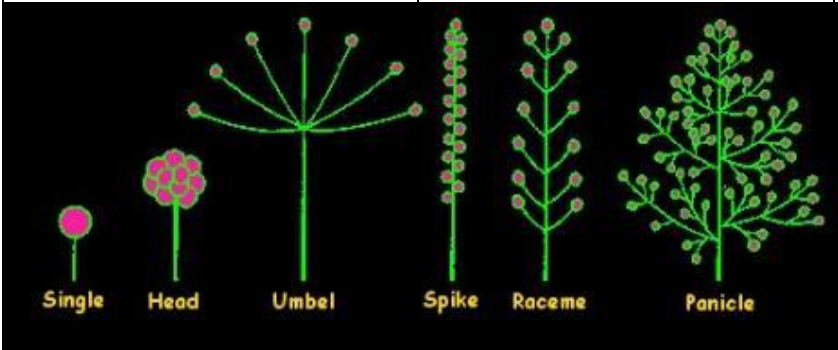
Rush



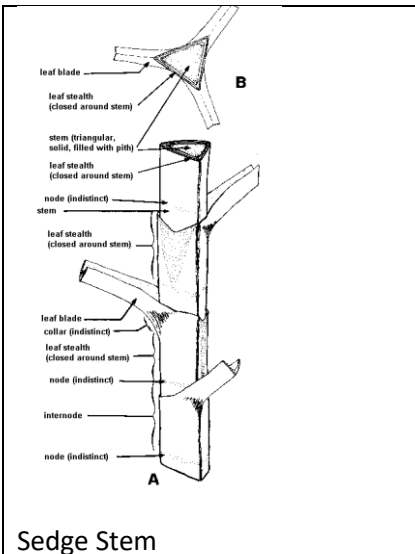
Sedge



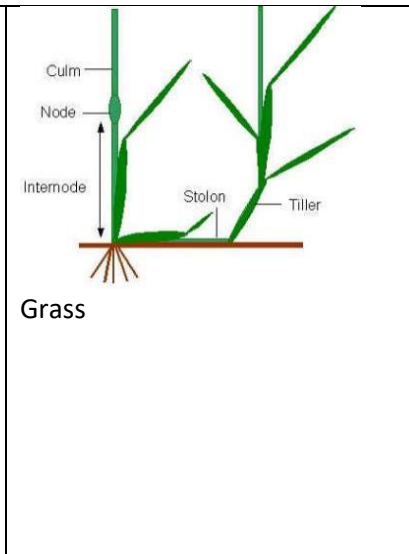
Grass



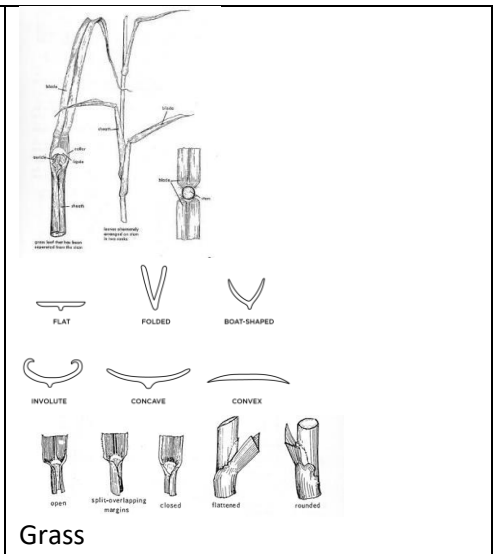
Flower head arrangement



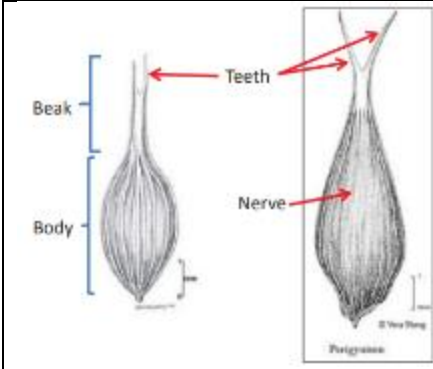
Sedge Stem



Grass



Grass



Carex- sedge

